

Uploading geoids into FAST Survey/MobileMapper CE

30 June 2006

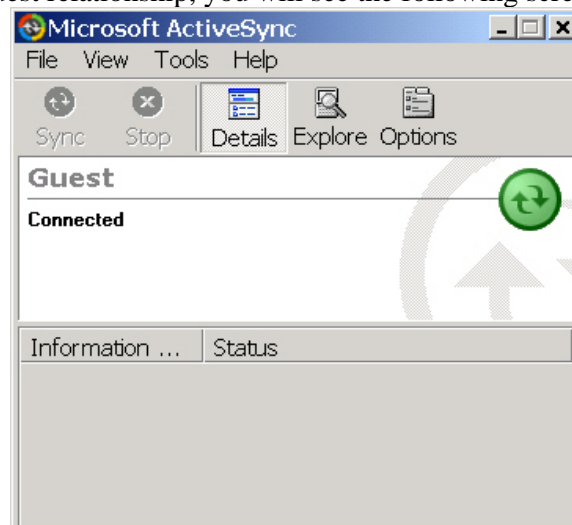
A. Connect MobileMapper CE to your PC with Microsoft ActiveSync

1. Attach the I/O module to the back of the MobileMapper CE receiver.
2. Insert the small connector on the USB cable to the I/O module and the large connector to your PC.
3. If you have installed Microsoft ActiveSync on your PC, the PC should automatically recognize your receiver as soon as you attach it.
4. ActiveSync will ask if you wish to set up a partnership between your PC and MobileMapper CE.



Note: Most customers prefer not establishing a partnership but instead set up a Guest relationship between their PC and the MobileMapper CE. But the choice is yours.

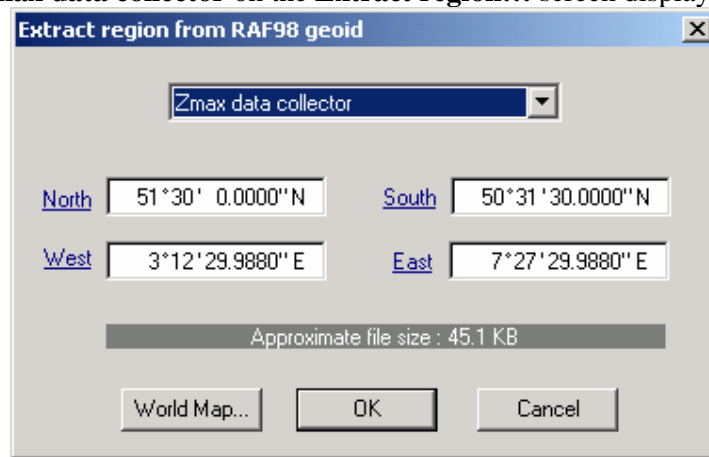
5. If you set up a guest relationship, you will see the following screen:



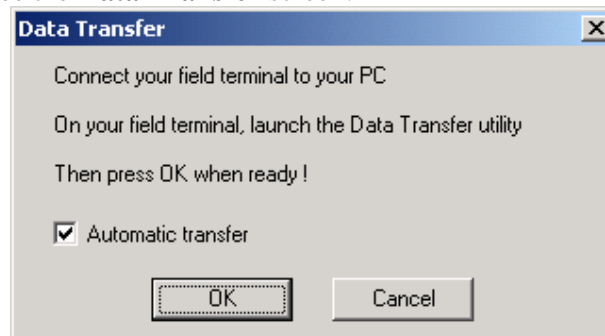
ActiveSync is now running and your PC and MobileMapper CE are in communication. The screen above will be minimized when you activate any other application.

B. Upload a geoid using the **Geoids** application

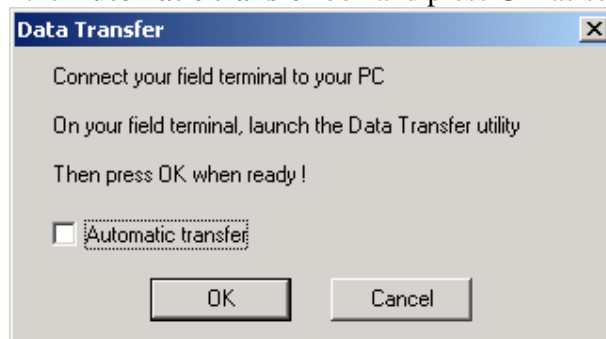
1. Launch Geoids from GNSS Solutions (Tools→Geoids) or from Windows (Start→Programs→GNSS Solutions→Tools→Geoids)
2. Select the geoid file you want to upload
3. Select Transfer→Writes...
4. Select **Zmax data collector** on the **Extract region...** screen displayed below:



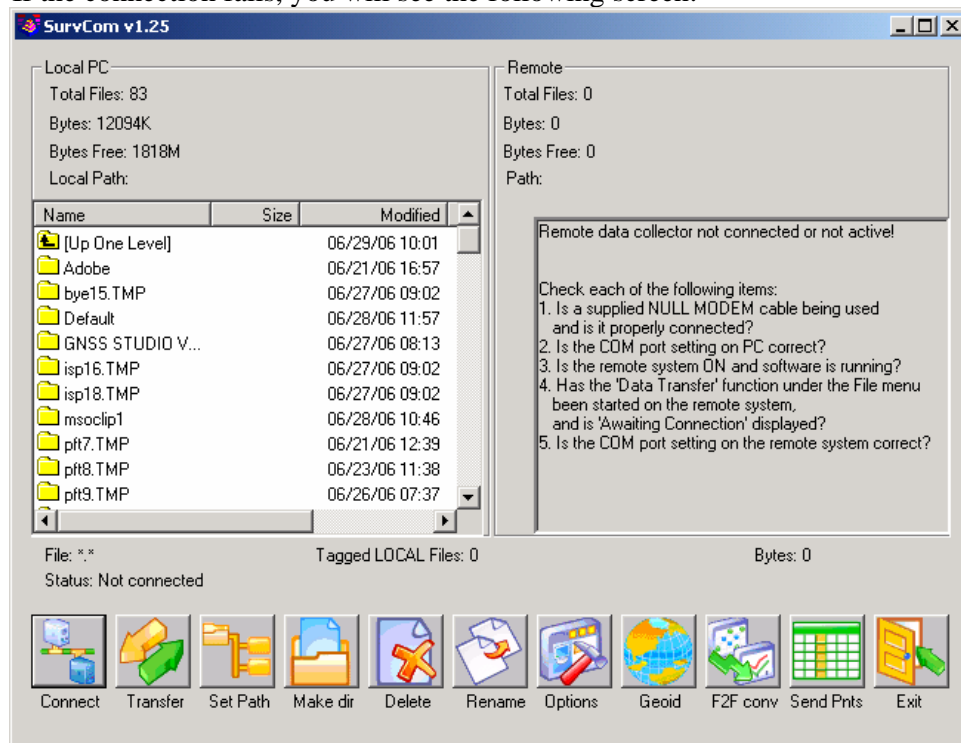
5. If you want to upload only a part of the geoid, manually modify the coordinates of area or click the **World Map...** button and draw the area. When you are done, press **OK** on the **Extract region...** screen. This uploads the geoid file to the C:\Documents and Settings\<yourusername>\local settings\Temp\ folder.
6. You will now see the **Data Transfer** screen:



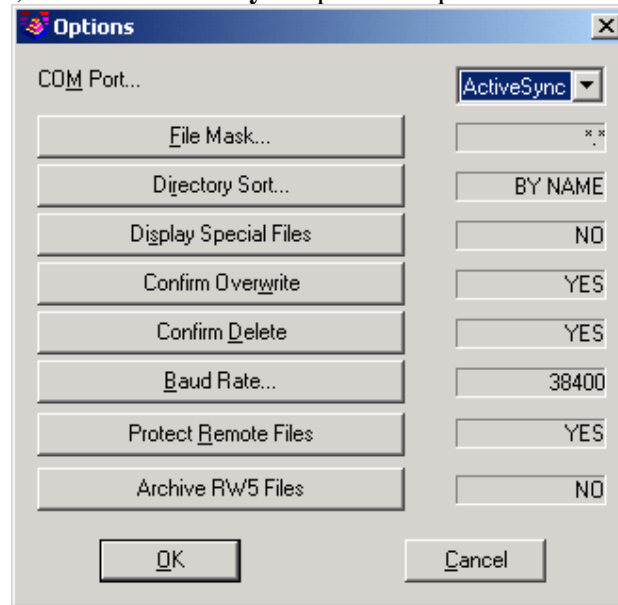
7. When the setting **Automatic transfer** is checked on, the transfer proceeds easily, but it works only if the port number and remote folder settings are correct. So the first time you transfer data or if a data transfer ever fails while in **Automatic transfer** mode, uncheck the **Automatic transfer** box and press **OK** as seen below.



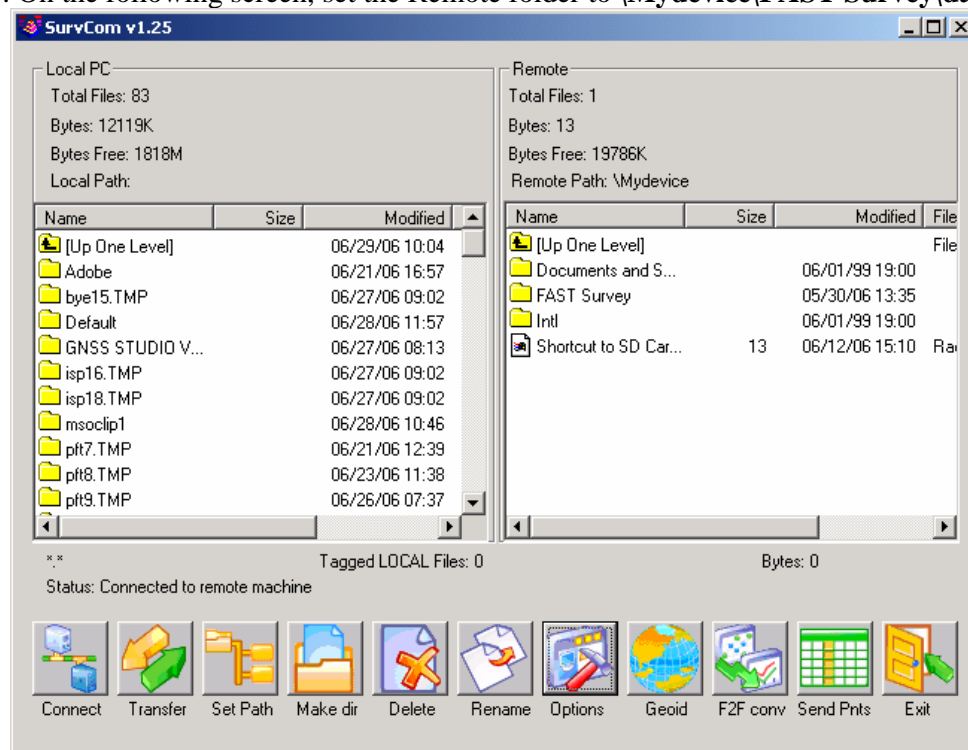
8. If the connection fails, you will see the following screen:



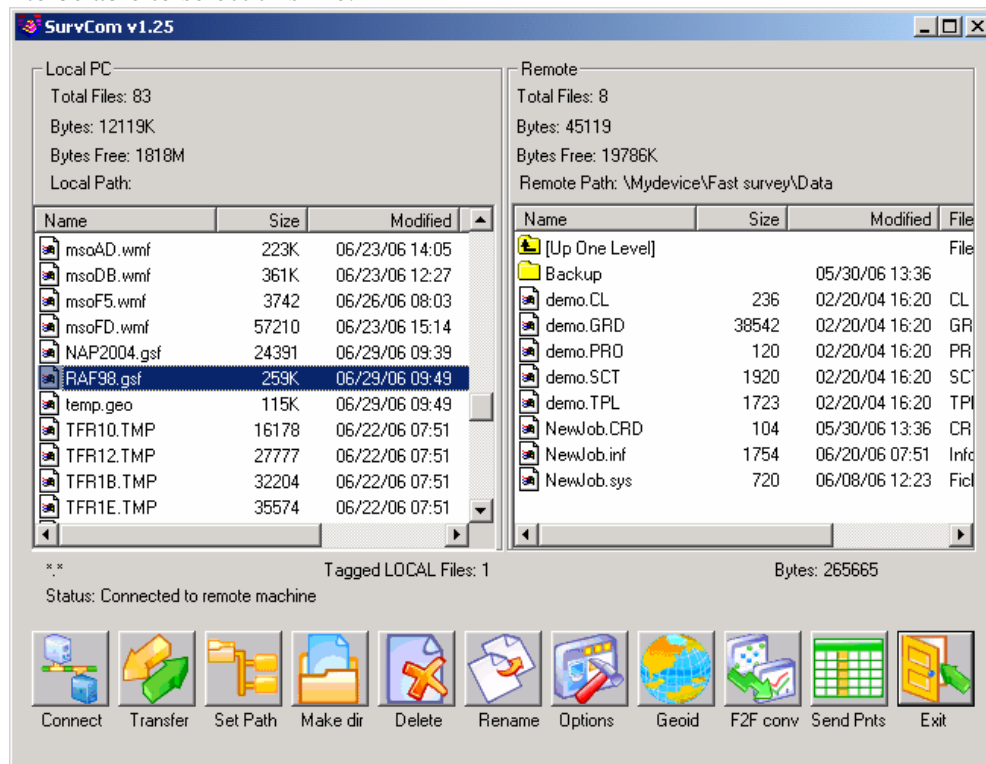
9. Press **Options**, select the **ActiveSync** option and press **OK**



10. On the following screen, set the Remote folder to **\Mydevice\FAST Survey\data**



11. Select the geoid file (with a gsf extension) you wish to use. Because this file was saved to the C:\Documents and Settings\<yourusername>\local settings\Temp\ folder at the end of Step 5 above, you will first need to browse to this folder in the left pane to be able to select this file.



12. Click the **Transfer** icon near the bottom left of the screen and you will upload the geoid to the MobileMapper CE receiver.